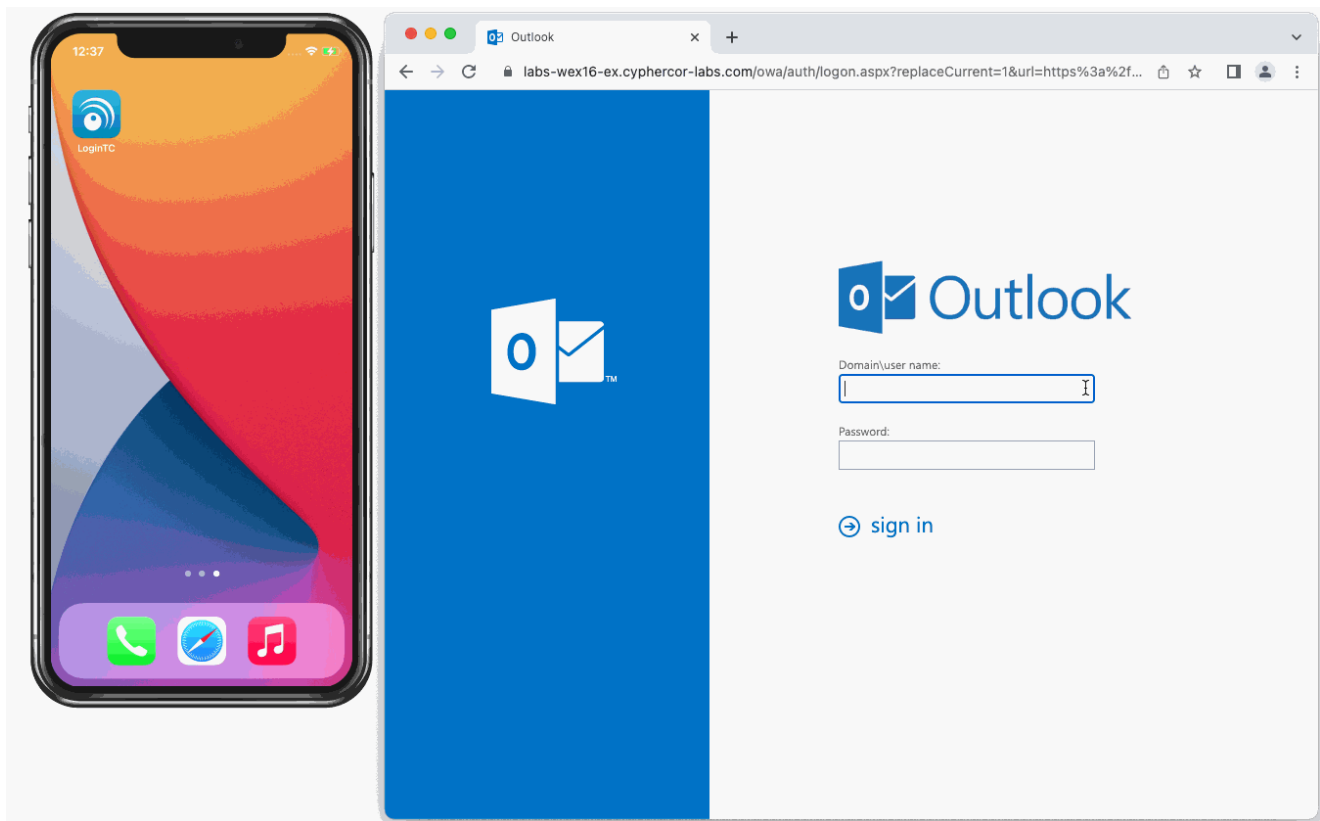


Microsoft Outlook Web App (OWA) 2FA

logintc.com/docs/connectors/owa



Overview

The [LoginTC OWA Connector](#) protects access to your Microsoft Outlook Web App by adding a second factor LoginTC challenge to existing username and password authentication.

Subscription Requirement

Your organization requires the **Business** or **Enterprise** plan to use the LoginTC OWA Connector. See the [Pricing](#) page for more information about subscription options.

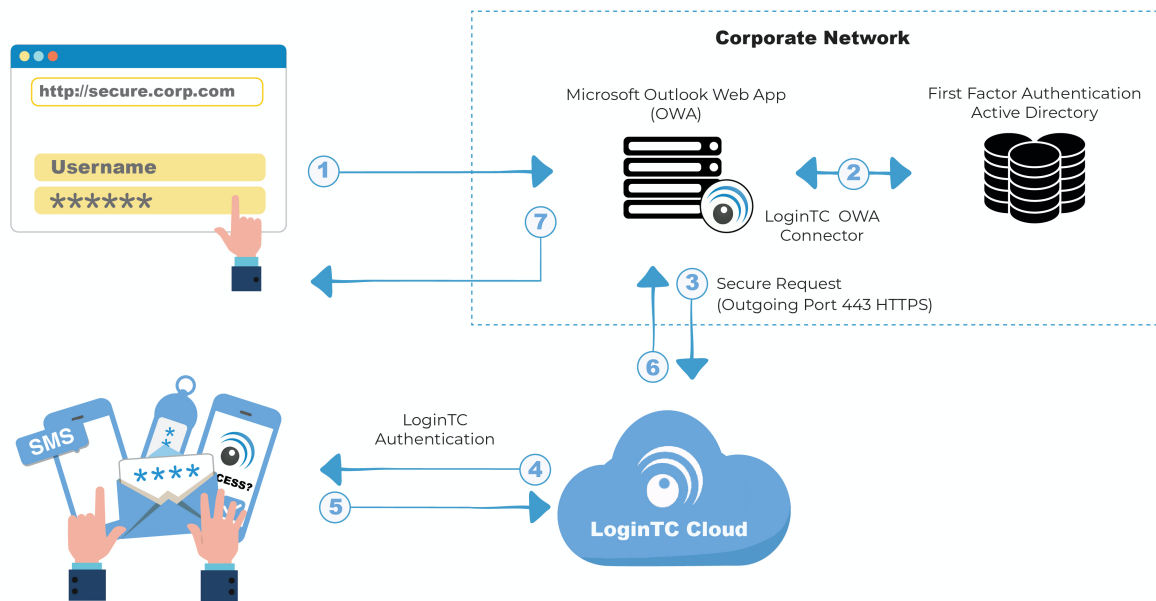
User Experience

After entering the username and password into the Outlook Web App login, the user is shown a selection of second factor options. The user clicks a button to receive a LoginTC push notification, authenticates and is logged in.

Video Instructions

Watch Video At: <https://youtu.be/Ob-i595inAc>

Architecture



Authentication Flow

1. A user attempts access to OWA with username / password
2. The username / password is verified against an existing first factor directory (i.e. Active Directory)
3. The request is trapped by LoginTC OWA Connector and an authentication request is made to LoginTC Cloud Services
4. Secure push notification request sent to the user's mobile or desktop device
5. User response (approval or denial of request) sent to LoginTC Cloud Services
6. The LoginTC OWA Connector validates the user response
7. User is granted access to OWA

ActiveSync and Outlook App Access

The LoginTC OWA Connector adds a two-factor authentication prompt to Outlook on the web (formerly Outlook Web App). The LoginTC OWA Connector does not have any impact on ActiveSync, Outlook App authentication or other Exchange mail protocols such as POP3 and IMAP. **In most cases, these other protocols should be either disabled or protected in another way to ensure that all access to your Exchange is protected with two-factor authentication.**

See the [LoginTC OWA Connector ActiveSync and Outlook App Access](#) knowledge base article for more information.

Prerequisites

Before proceeding, please ensure you have the following:

- [LoginTC Admin Panel](#) account
- Microsoft Windows Server 2012 R2, Windows Server 2016, Windows Server 2019 or Windows Server 2022
- Exchange 2010, Exchange 2013, Exchange 2016 or Exchange 2019
- .NET Framework 4.5.1 or higher

Working OWA Deployment

It is strongly recommended that you have a working and tested Outlook Web App deployment prior to adding LoginTC authentication.

Create Application

Start by creating a LoginTC Application for your deployment. An Application represents a service (e.g. An application is a service (e.g., VPN or web application) that you want to protect. e) that you want to protect with LoginTC.

Create a LoginTC Application in [LoginTC Admin Panel](#), follow [Create Application Steps](#).

If you have already created a LoginTC Application for your deployment, then you may skip this section and proceed to [Installation](#).

Normalize Usernames

Usernames in Outlook Web App are typically in the form “CORP\john.doe”, while in the LoginTC Admin Panel it is generally more convenient to simply use “john.doe”.

Configure **Normalize Usernames** from the Domain settings by navigating to **Domains > Your Domain > Settings**.

Select **Yes**, **Normalize Usernames** scroll down and click **Update**.

Installation

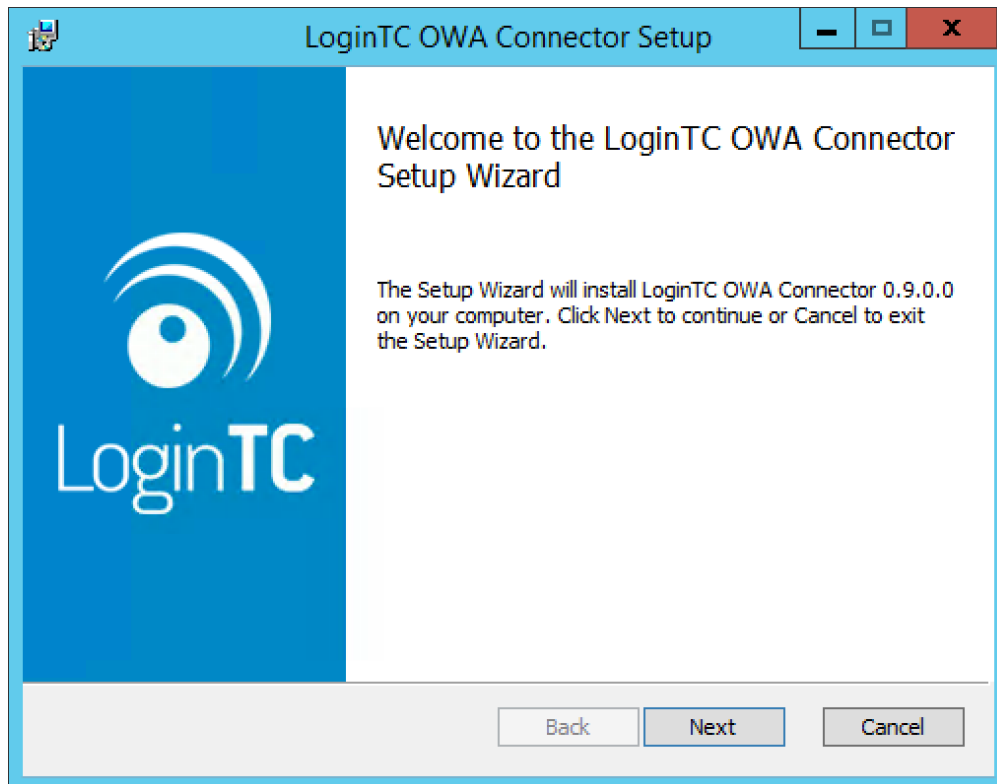
Follow the instructions to install the LoginTC OWA Connector:

IIS service reset

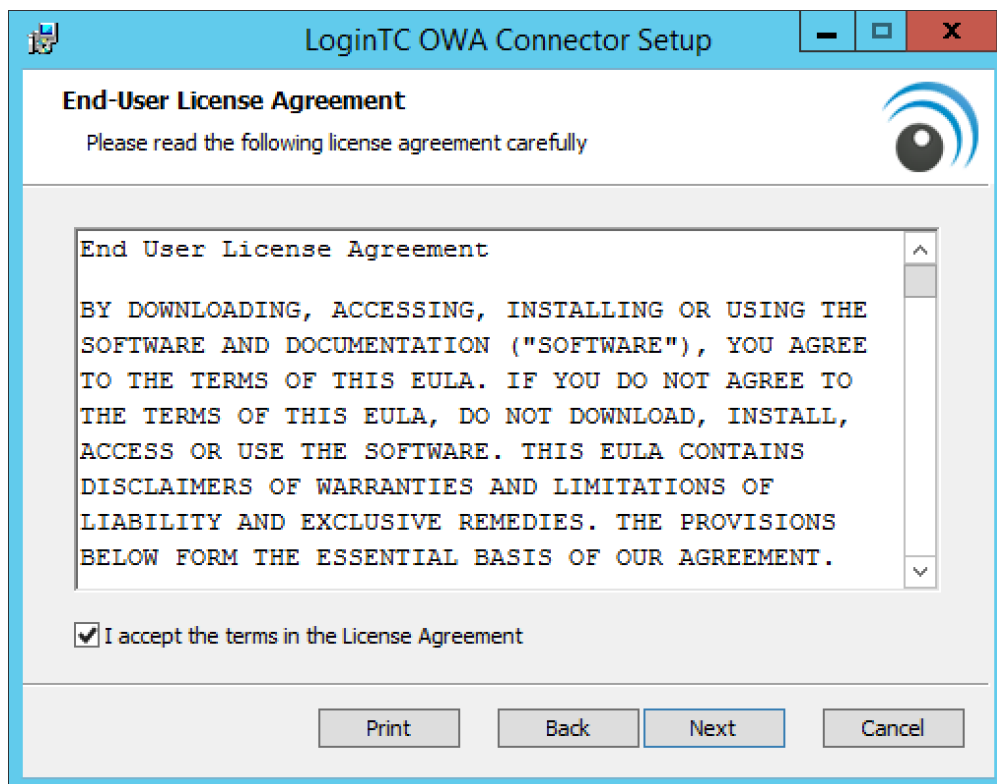
The installer will restart IIS services upon completion and this will impact other dependent services. We recommend performing these actions during a change windows.

1. Download the latest version of the [LoginTC OWA Connector](#)
2. Run the installer file as a privileged administrator user. The user must have permission to configure and restart IIS.

3. Press **Next**.



4. Read the License Agreement and press **Next** if you accept the terms.



5. Change the **LoginTC API Host** only if you have a private enterprise LoginTC deployment. Press **Next**:

Configuration: LoginTC

Configuration: LoginTC

Configure how the connector communicates with LoginTC

LoginTC API Host:

cloud.logintc.com

The fully qualified domain name (FQDN) of the LoginTC API host. Change this only if you have a private LoginTC enterprise deployment. The default public LoginTC API host is cloud.logintc.com.

Back Next Cancel

6. Enter your LoginTC **Application ID** and **Application API Key**. These values are found on your LoginTC Admin Panel. Press **Next**.

Configuration: LoginTC

Configuration: LoginTC

Configure how the connector communicates with LoginTC

Application ID:

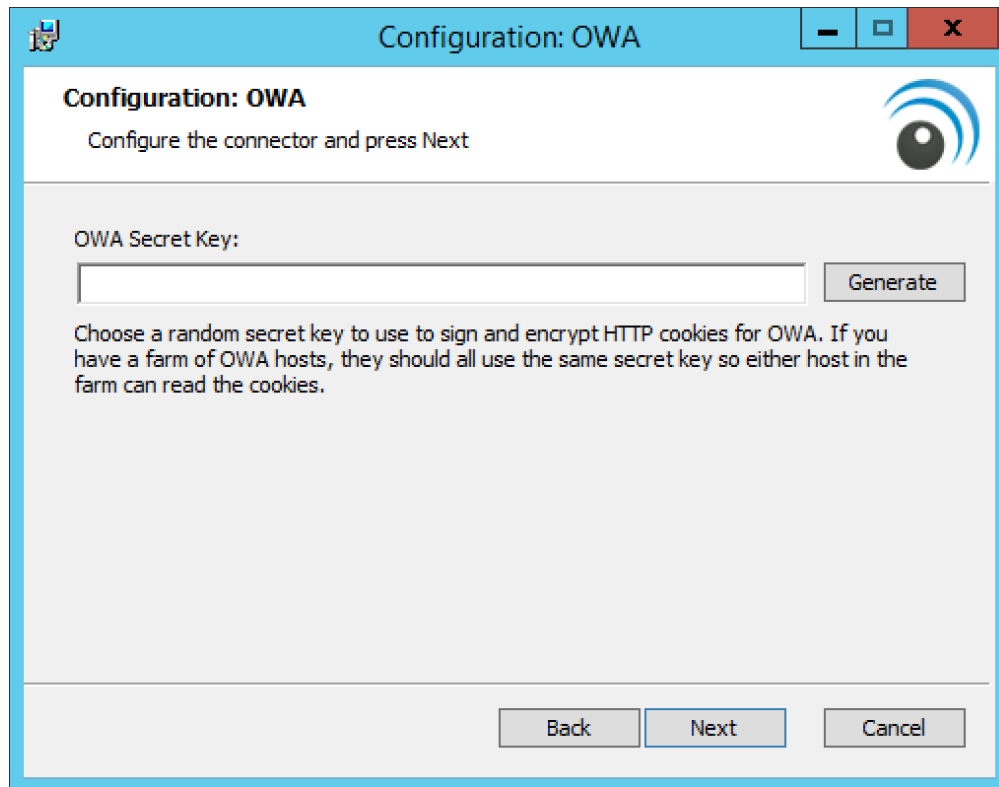
The 40-character hexadecimal LoginTC application identifier.

Application API Key:

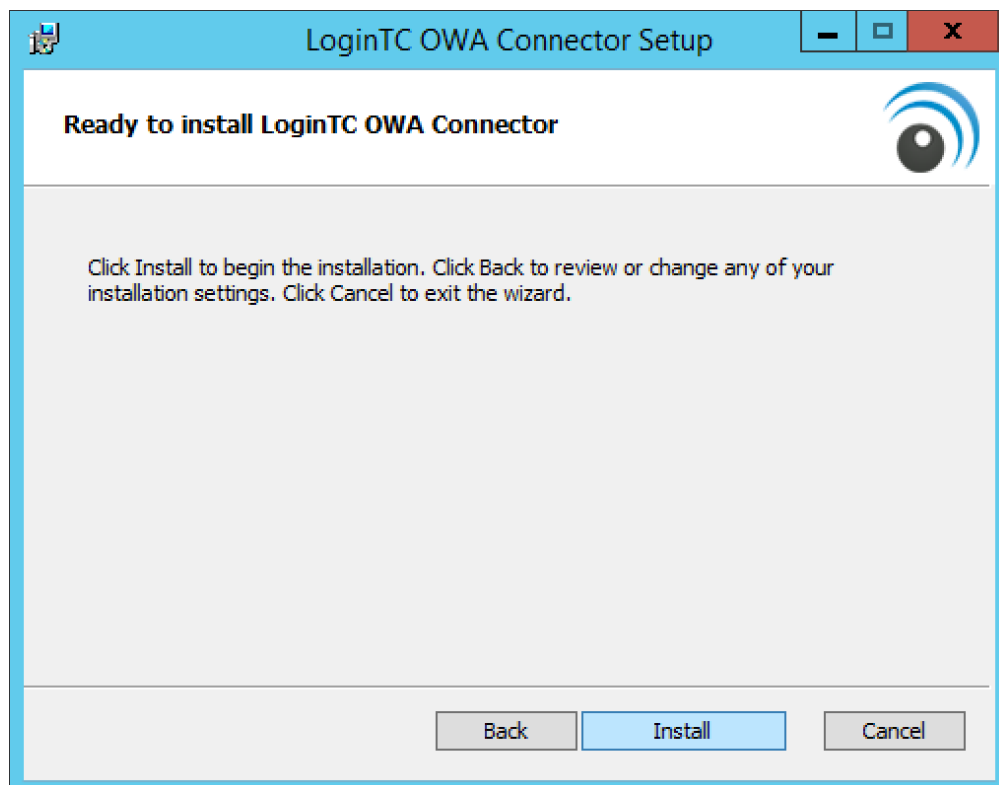
The 64-character alphanumeric LoginTC application API key.

Back Next Cancel

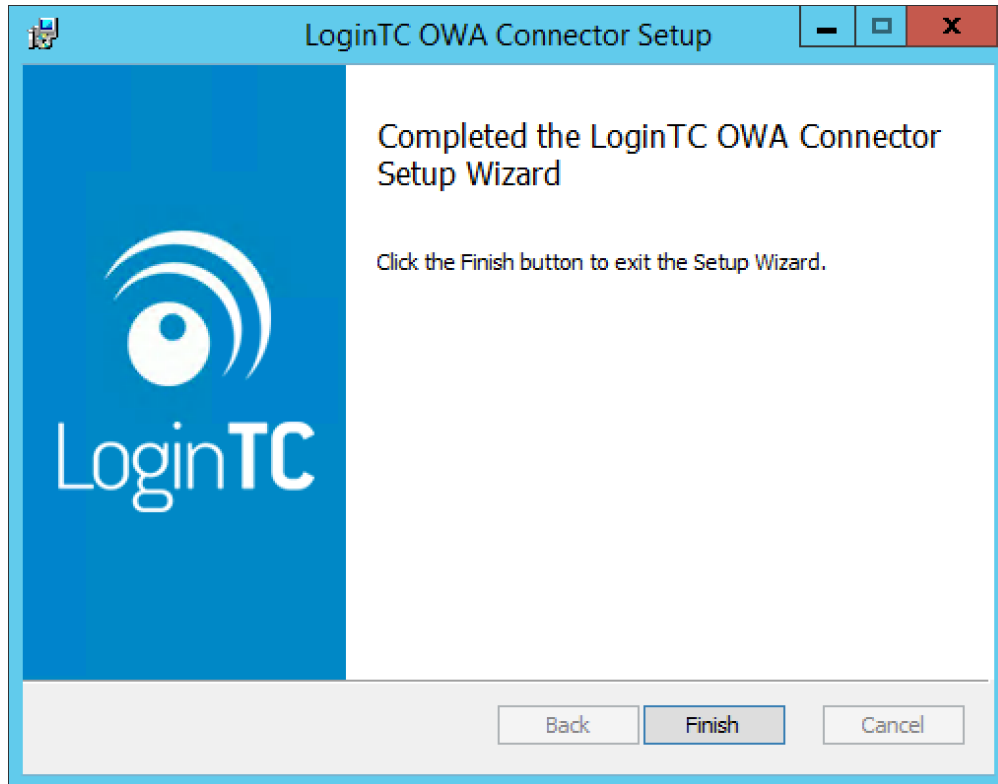
7. Choose a secret to use for encrypting and signing OWA sessions. If you already have a OWA secret key, then enter it. Press **Next**.



8. Press **Next**.



9. Press **Finish**

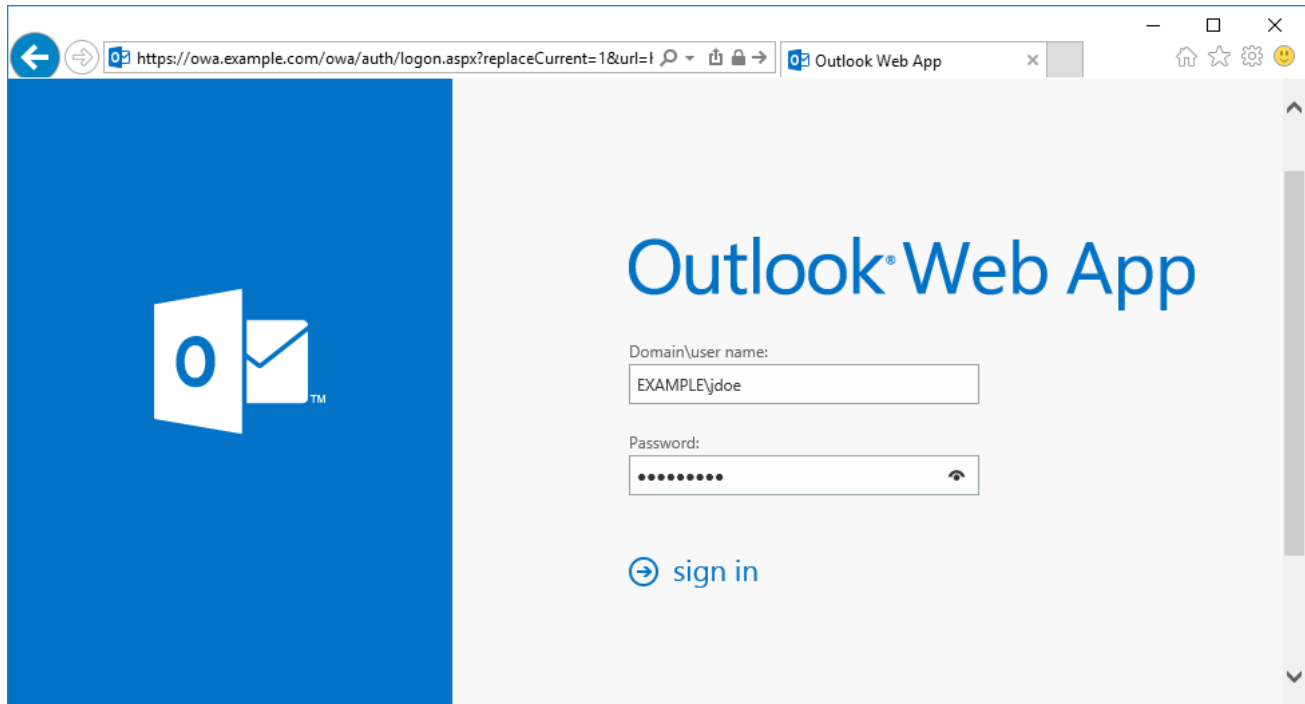


The LoginTC OWA Connector is now installed and protecting your Outlook Web App.

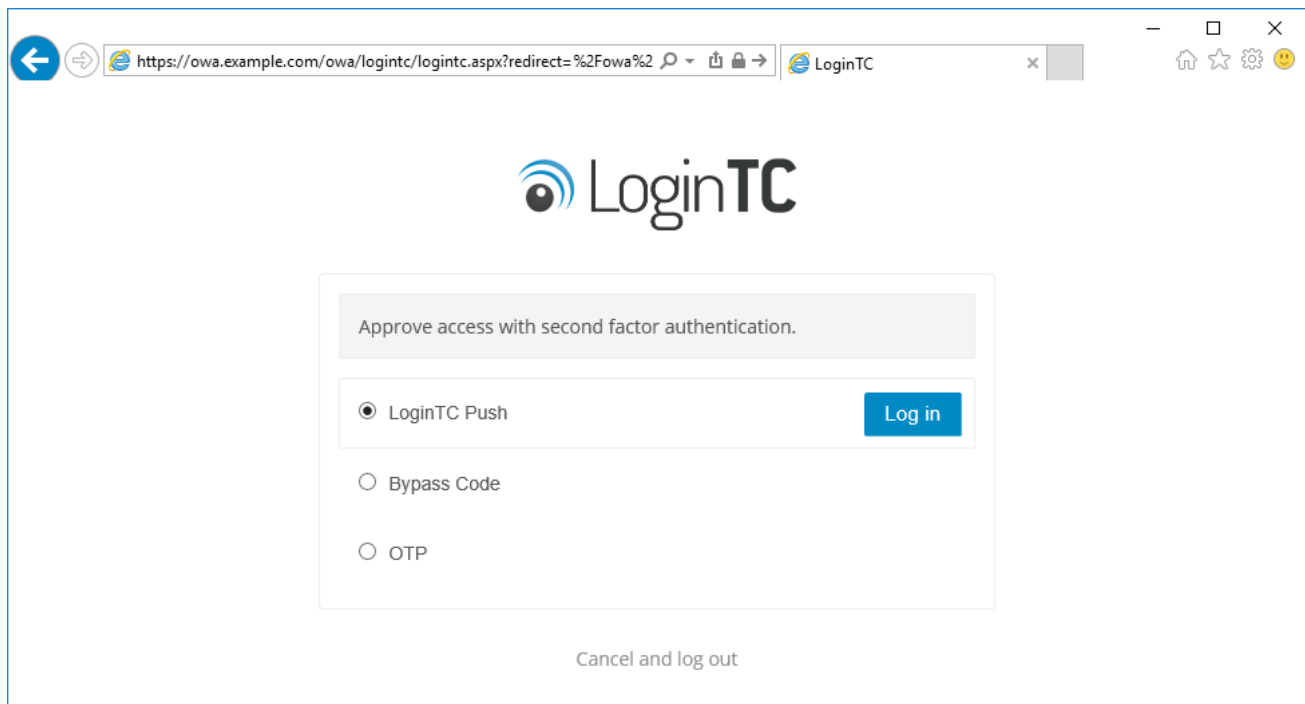
Usage

This chapter demonstrates the possibilities of the LoginTC OWA Connector from both an administrator's and end user's point of view.

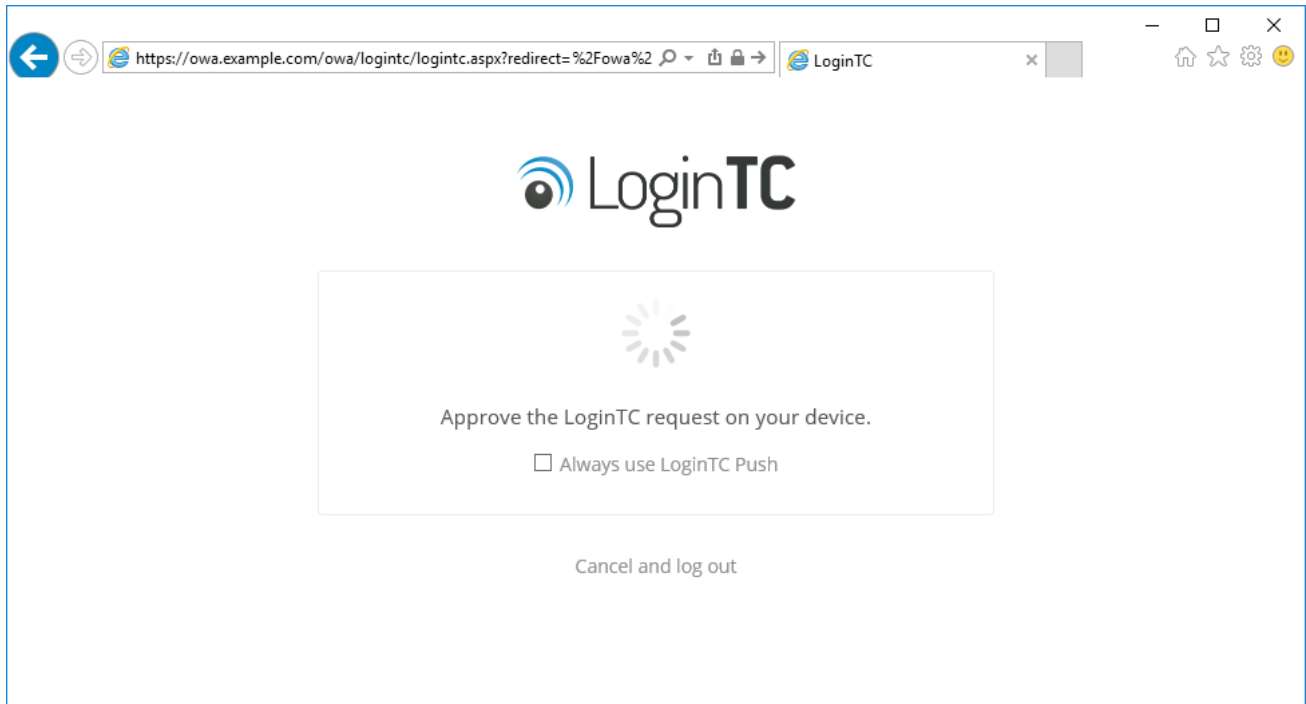
The OWA initial login page where the user enters their username and password is unmodified.



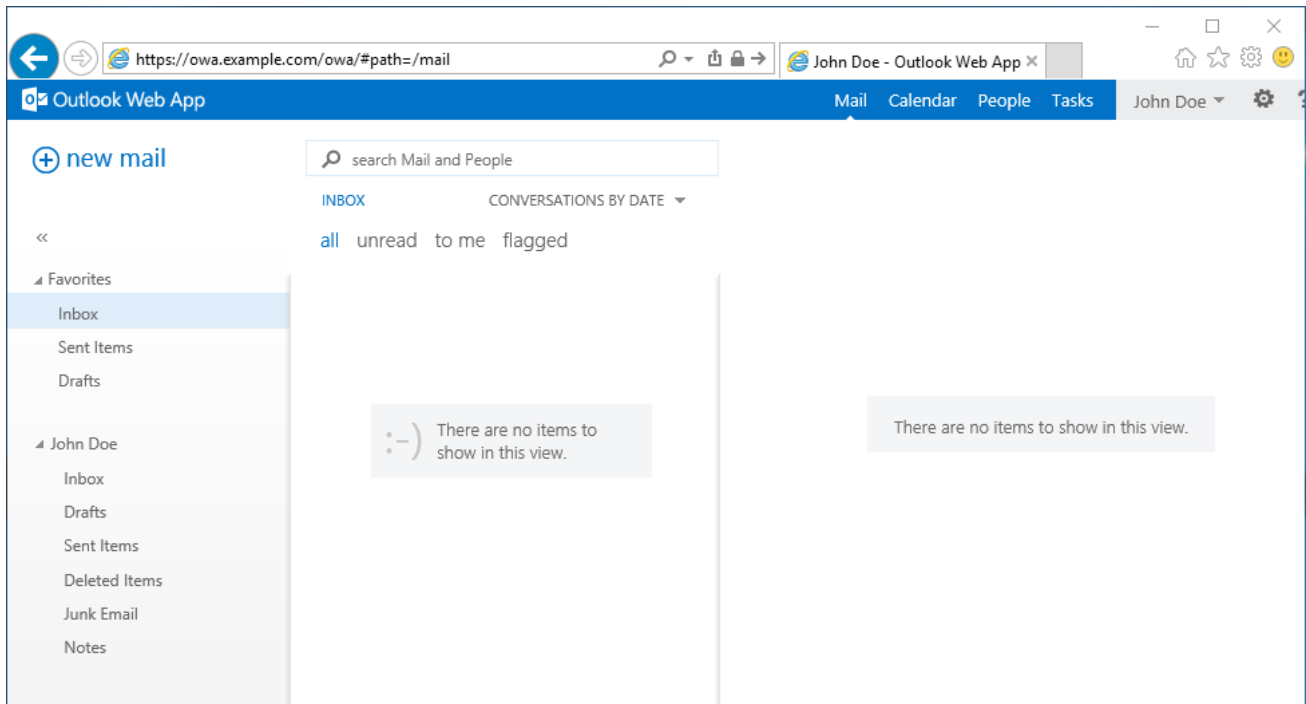
After successfully authenticating with their username and password, the user is presented with options to log in with LoginTC. The user may select to authenticate using LoginTC push, bypass codes, or OTPs.



If the user selects LoginTC push, they are informed to approve the LoginTC request on their device. The user is also presented with an option to remember their LoginTC login choice. The next time the user logs in they will automatically receive a LoginTC push notification. The user may also cancel the login attempt and return to the login page.

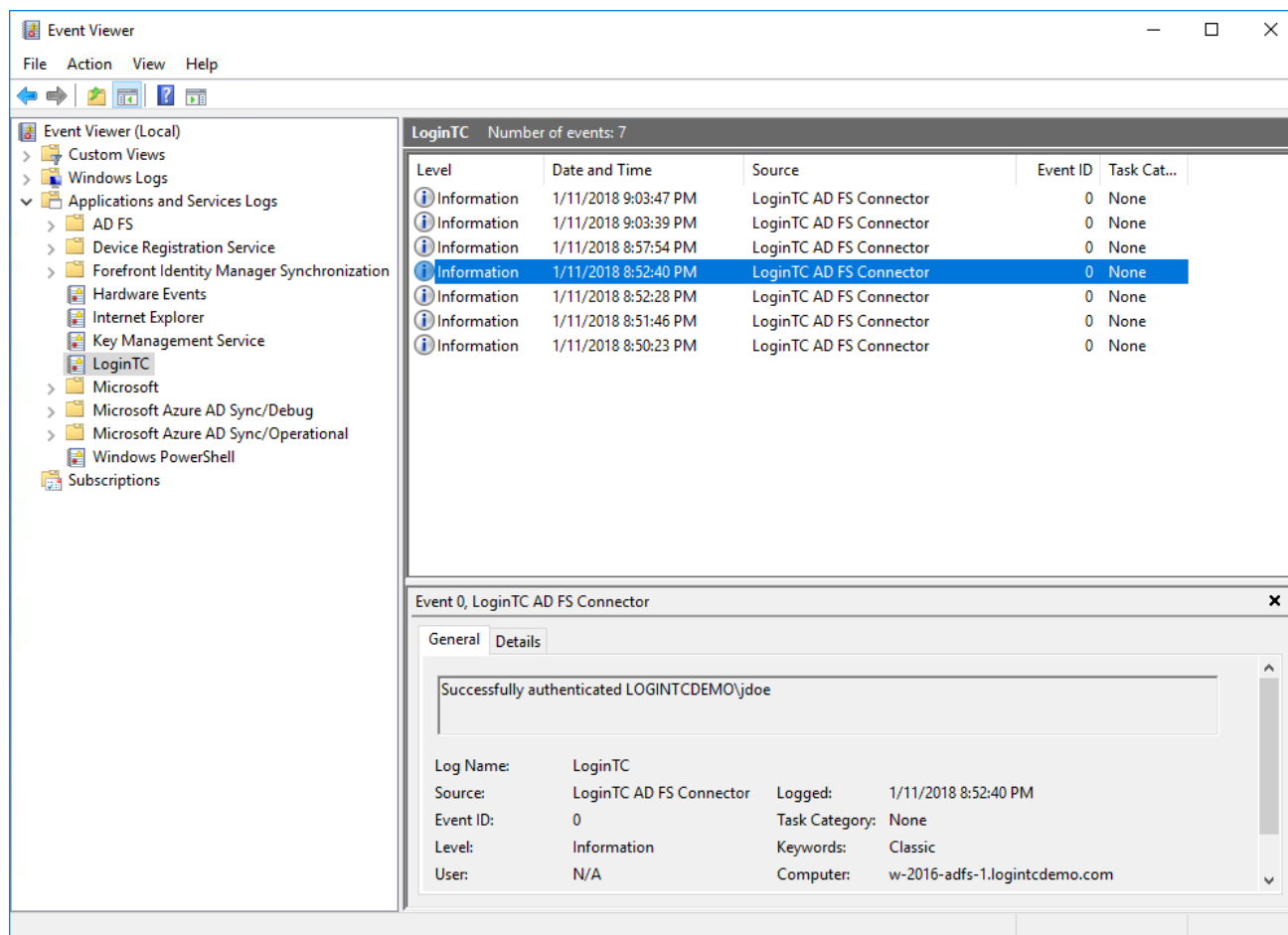


The user is brought to their OWA homepage after successfully authenticating with LoginTC.



Logging

The LoginTC OWA Connector logs events to the Microsoft Event Viewer under **Applications and Service Logs** → **LoginTC**. LoginTC OWA Connector event logs are helpful in debugging issues.



Passthrough

Passthrough allows you to specify which set of users should be challenged with LoginTC second-factor authentication, and which ones will not. This is often useful when testing and when rolling out a deployment to minimize the impact on others.

Static User List

Setting a static user list tells the LoginTC OWA Connector which users must be challenged for LoginTC second-factor authentication. All other users will be passed through without requiring a second-factor authentication.

Instructions to set a static list of users to be challenged:

1. Navigate to `C:\Program Files\Cyphercor>LoginTC OWA Connector`.
2. Create a new file `users.txt` in Notepad.
3. Populate the file with a list of users, one line at a time, in the following format: `DOMAIN\username`
4. Save the file.
5. Your change will be picked up by the connector within 60 seconds.

If the `users.txt` file does not exist then all users will be challenged with LoginTC second-factor authentication.

Group List

Setting a group list tells the LoginTC OWA Connector which AD security group members must be challenged for LoginTC second-factor authentication. All other users not belonging to any of the listed AD security groups will be passed through without requiring a second-factor authentication.

Instructions to set a list of AD security groups to be challenged:

1. Navigate to **C:\Program Files\Cyphercor\LoginTC OWA Connector**.
2. Create a new file **groups.txt** in Notepad.
3. Populate the file with a list of AD security groups, one line at a time.
4. Save the file.
5. Your change will be picked up by the connector within 60 seconds.

If the **groups.txt** file does not exist then all users will be challenged with LoginTC second-factor authentication (unless a static user list file exists).

Uninstallation

To uninstall the LoginTC OWA Connector, simply navigate to the **Add or remove programs** in the Windows **Control Panel**, find LoginTC OWA Connector in the list and follow the prompts.

Troubleshooting

Email Support

For any additional help please email support@cyphercor.com. Expect a speedy reply.

Related Connectors